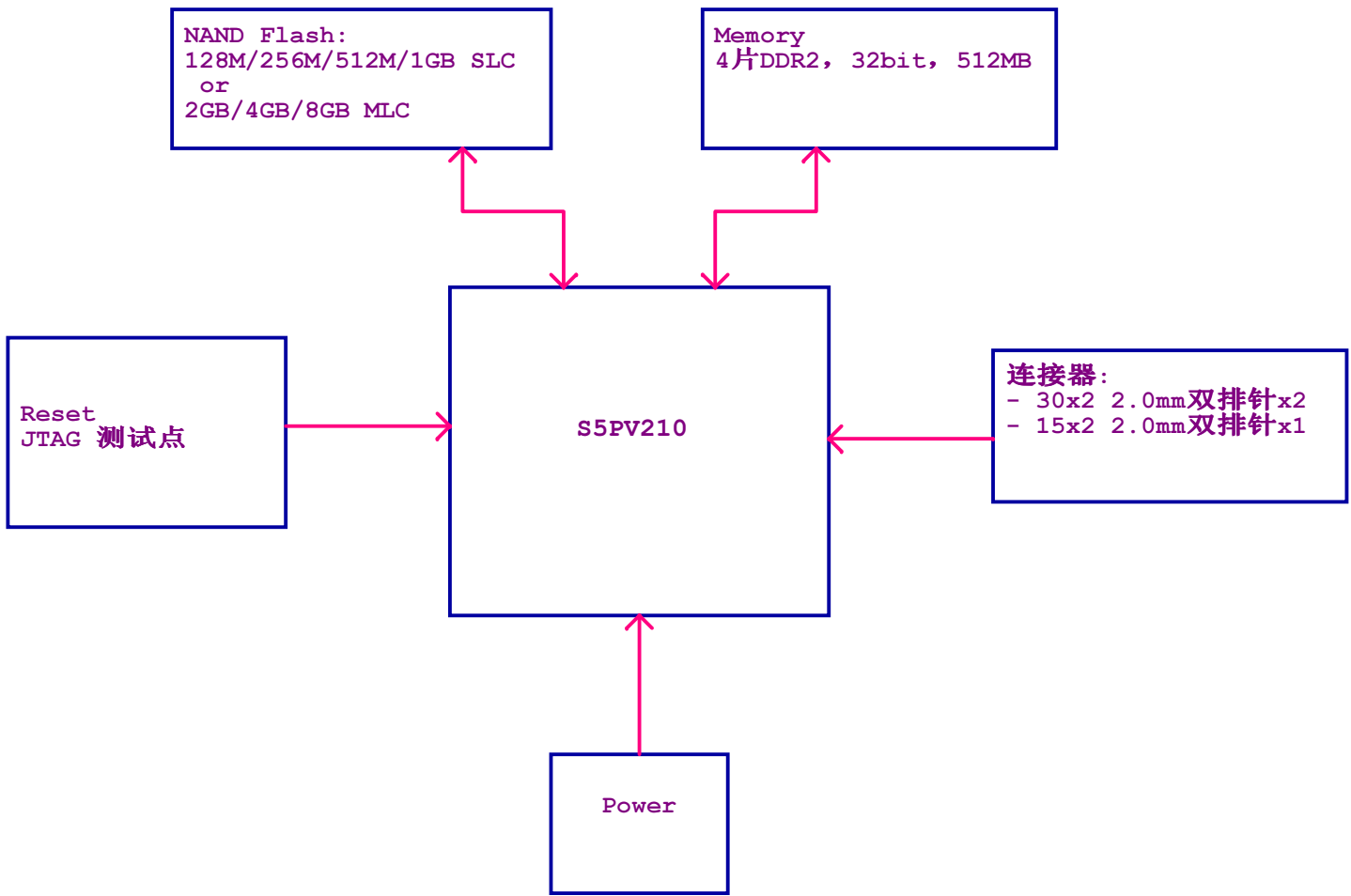


Revision History

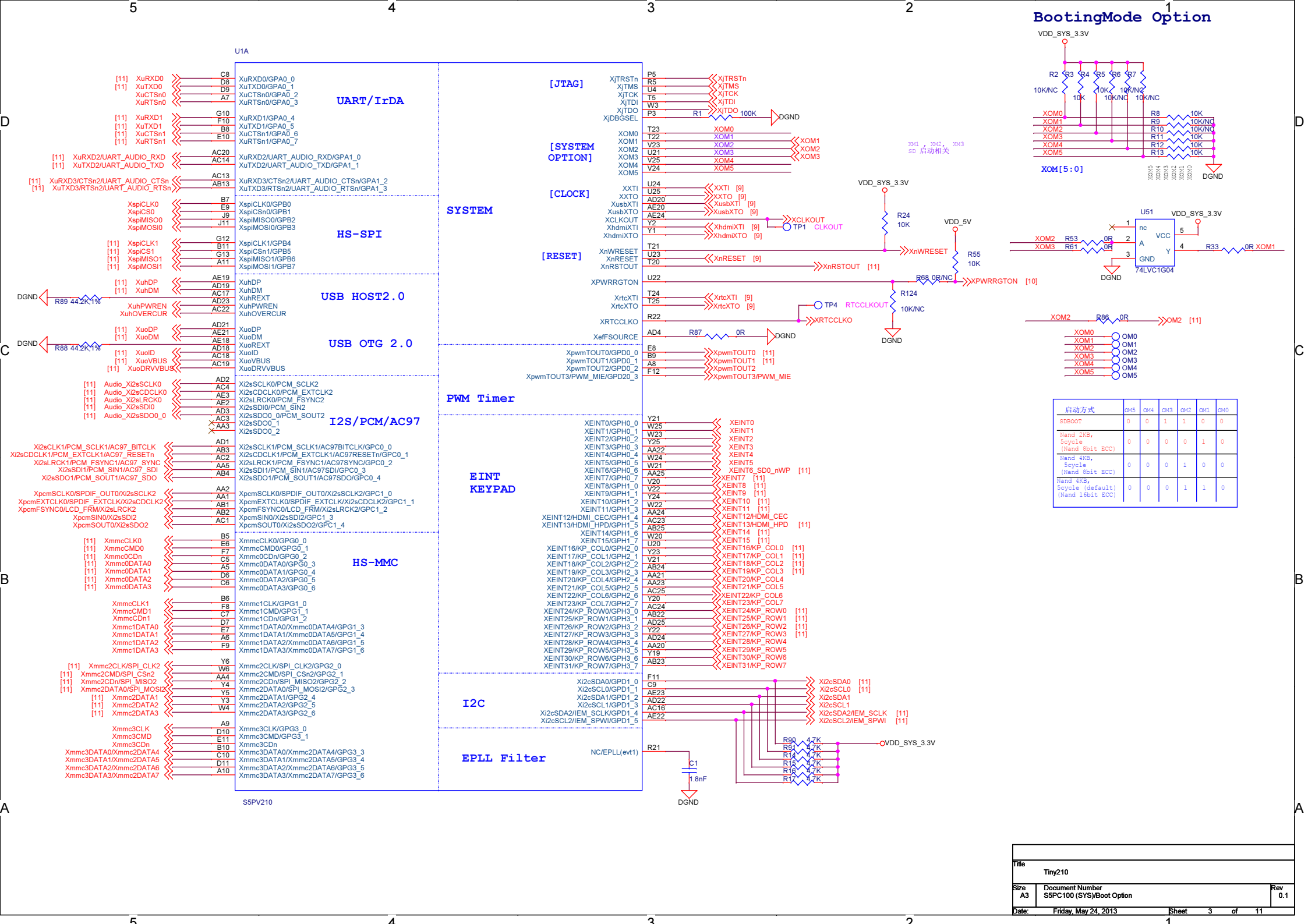
Revision	Date	Comments
1.0	2011-12-9	初次版本

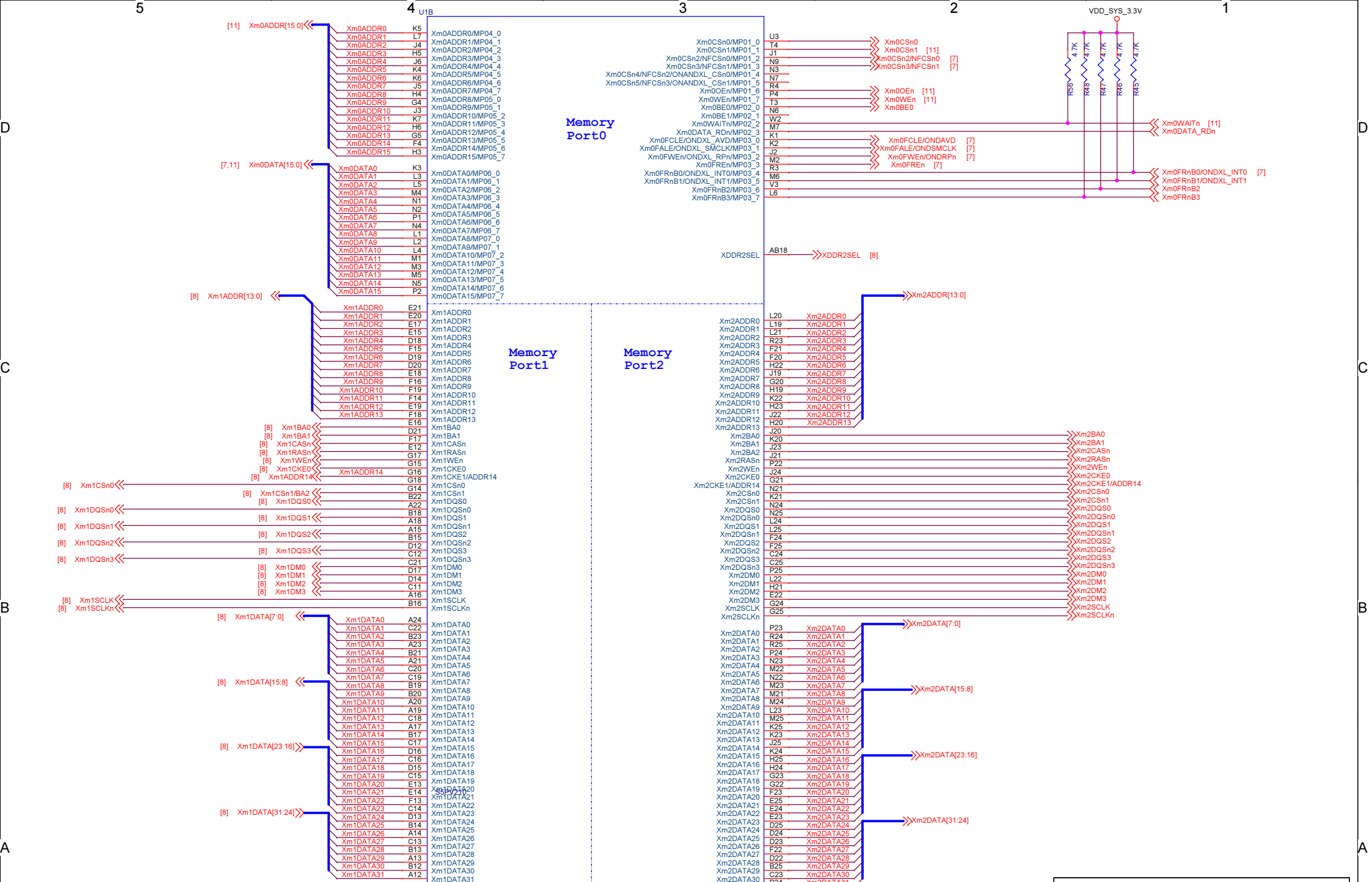
Index

01:Revision History and Index	1
02:Function Block Diagram	2
03:S5PV210 (SYS)/Boot Option	3
04:S5PV210 (Memory)	4
05:S5PV210 (Media)	5
06:S5PV210 (Power)	6
07:NAND/NOR Flash	7
08:Memory (DDR2)	8
09:Reset/JTAG/SD/Clock	9
10: LCD IF	10
11:system power	11
12:board connector	12
13:ID Mark/Fixed Hold	13

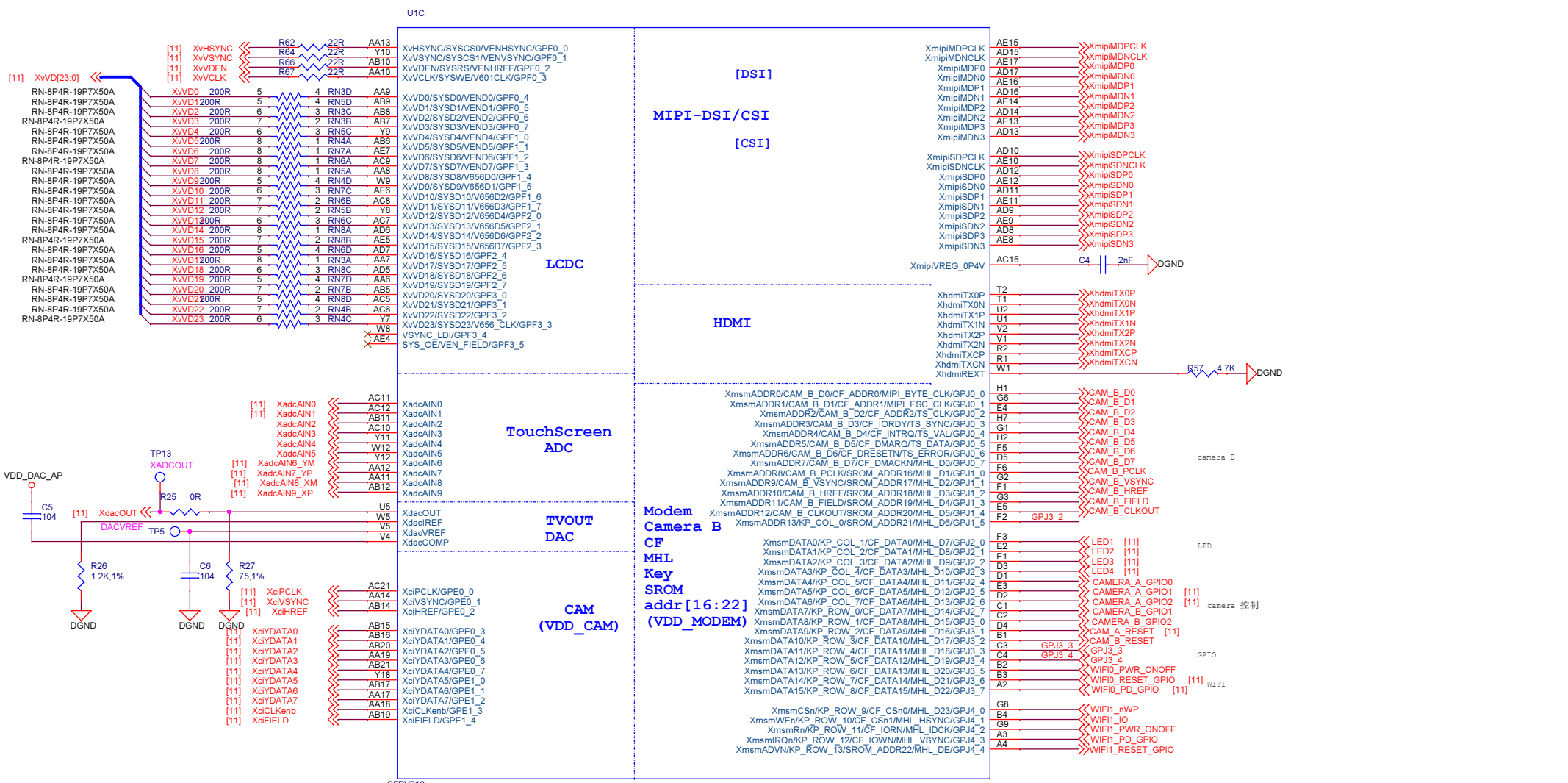


Title		
Tiny210		
Size	Document Number	Rev
A3	<Doc>	
Date:	Wednesday, September 25, 2013	Sheet 2 of 11



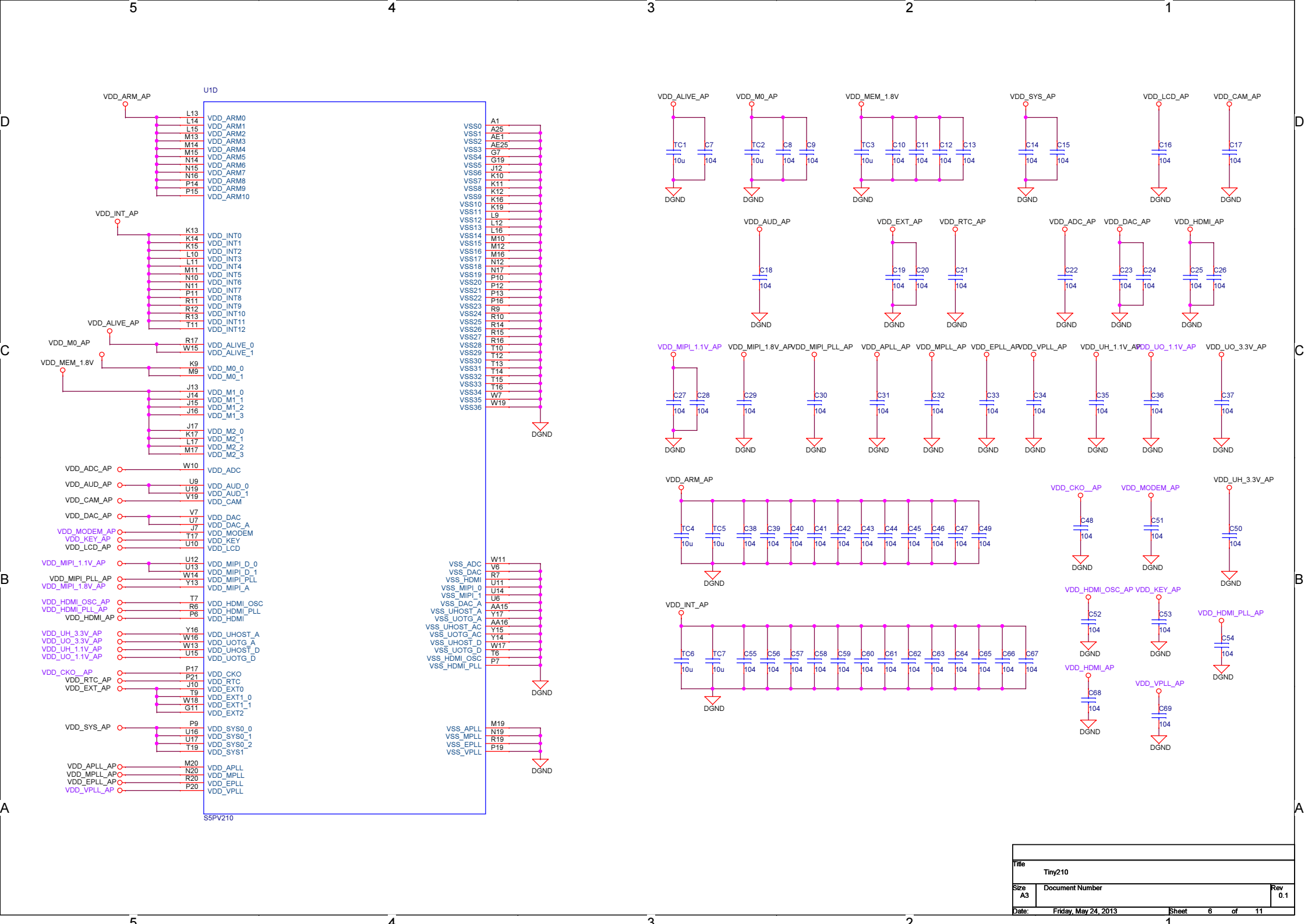


Title			Tiny210
Size	Document Number	Rev	
A3	<Doc>	0.1	
Date:	Friday, May 24, 2013	Sheet	4 of 11



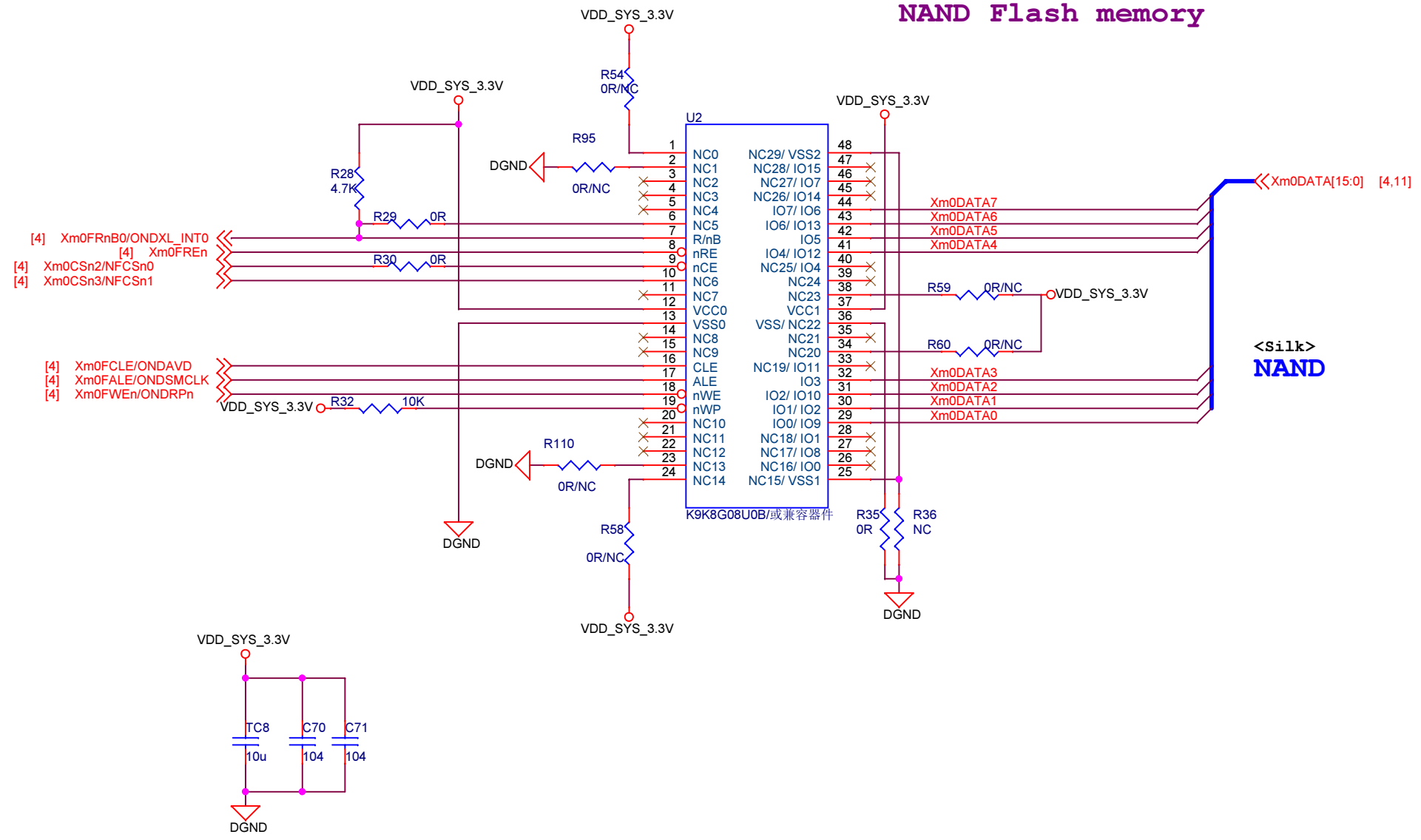
硬件 版本识别

Title		Micro210	
Size	A3	Document Number	<Doc>
Date:	Friday, May 24, 2013	Sheet	5 of 11
Rev	0.1		

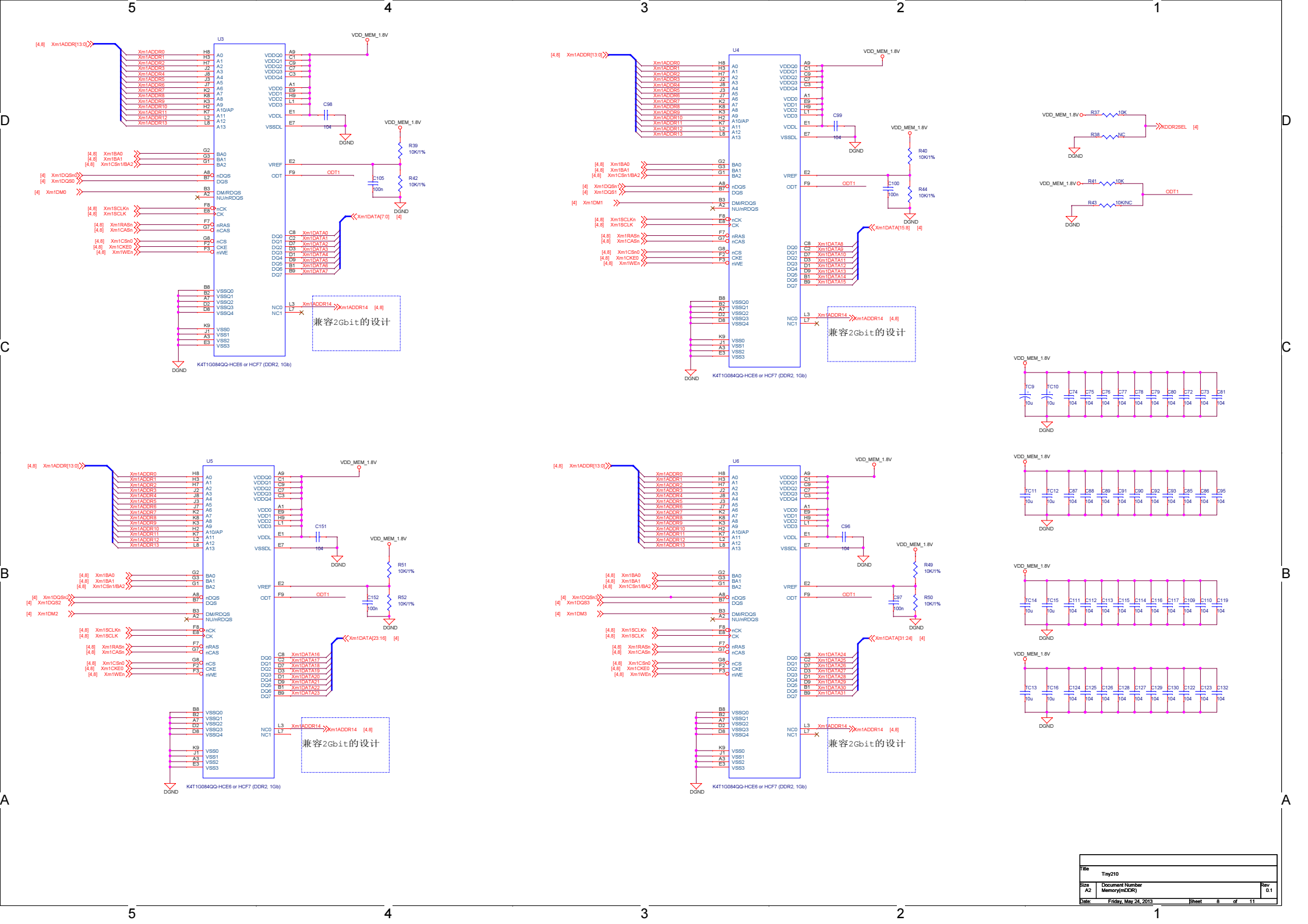


Title		
Tiny210		
Size	Document Number	Rev
A3		0.1
Date:	Friday, May 24, 2013	Sheet 6 of 11

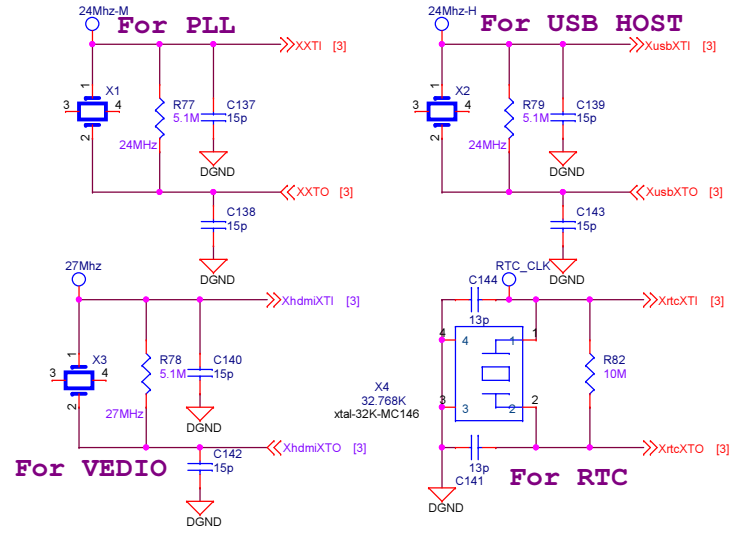
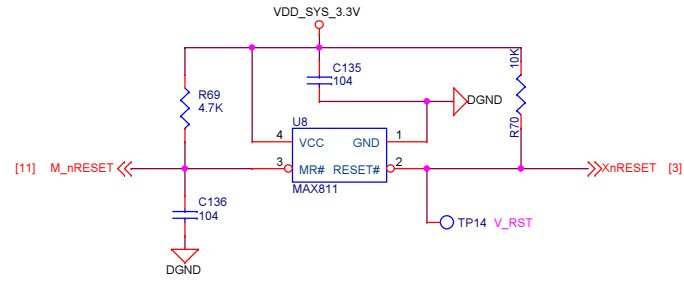
NAND Flash memory



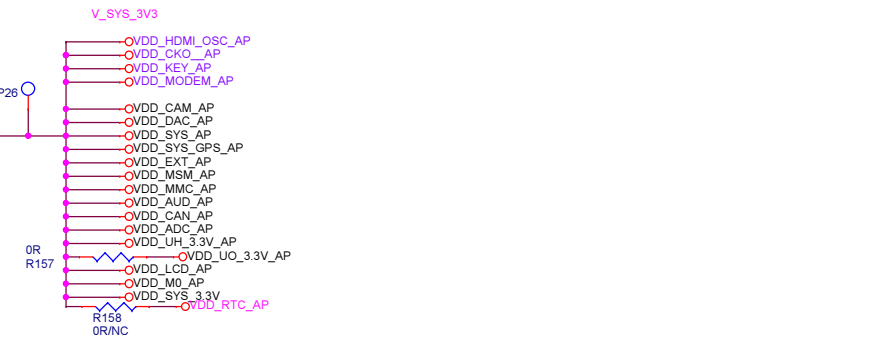
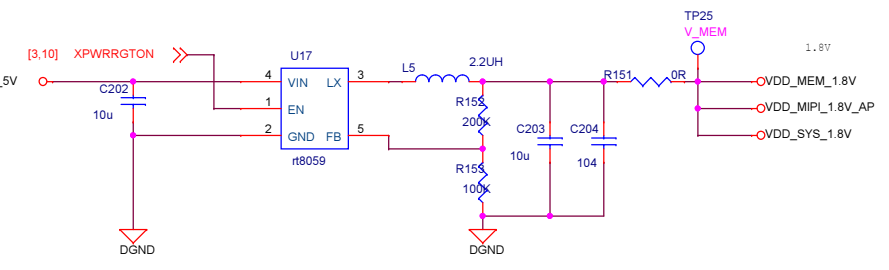
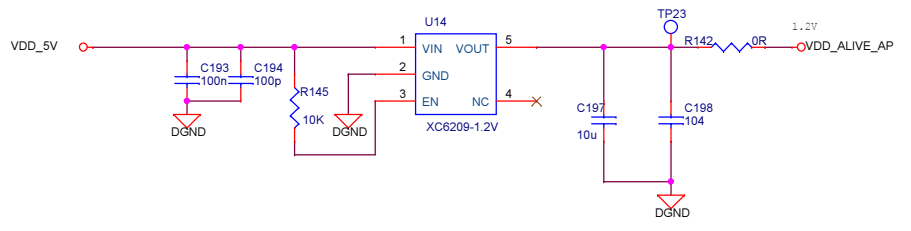
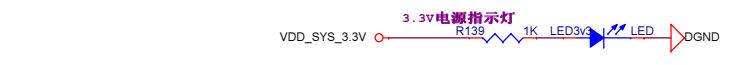
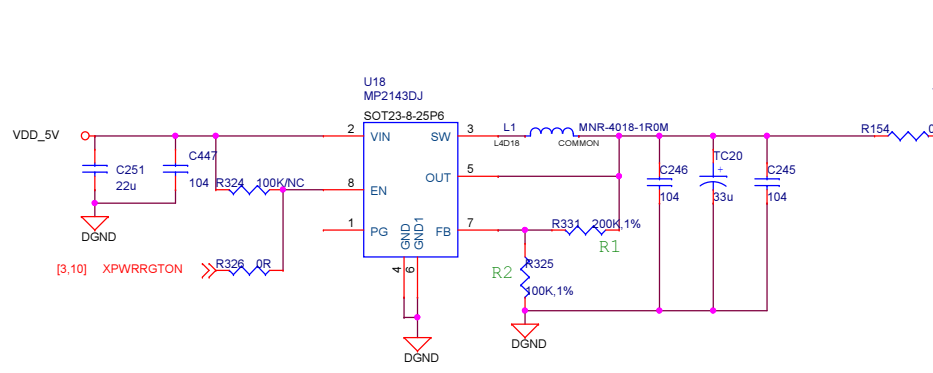
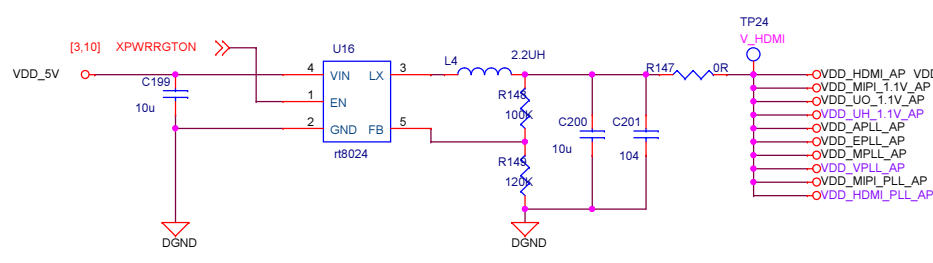
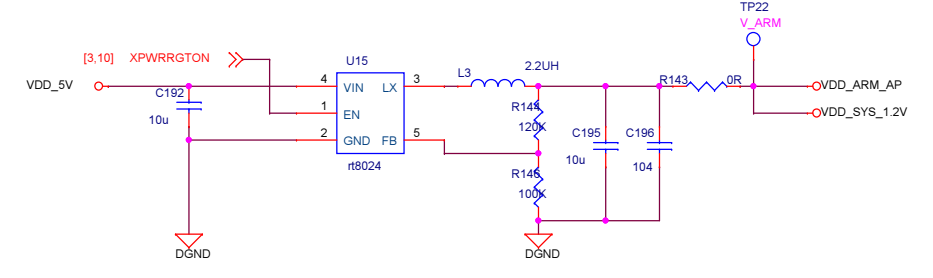
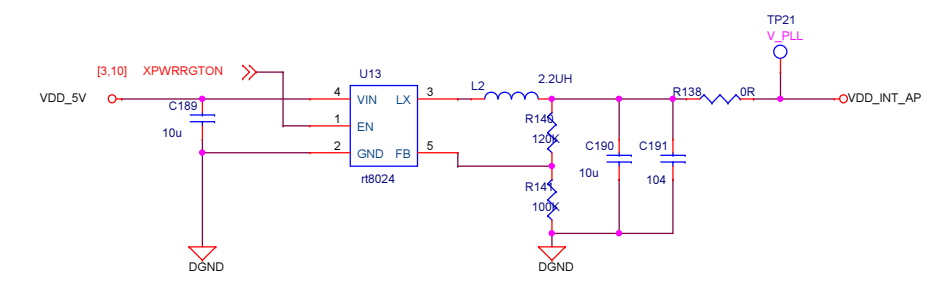
Title		
Tiny210		
Size	Document Number	Rev
A4	<Doc>	0.1
Date:	Wednesday, September 25, 2013	Sheet 7 of 11



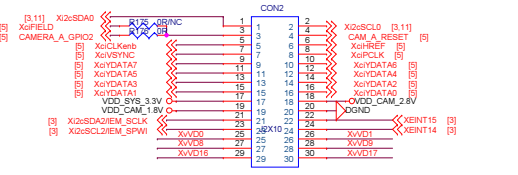
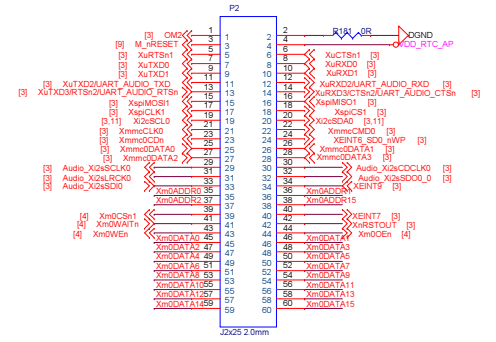
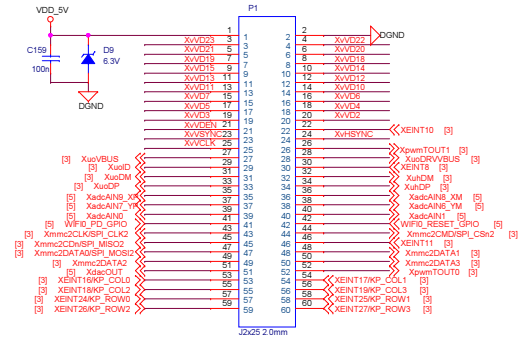
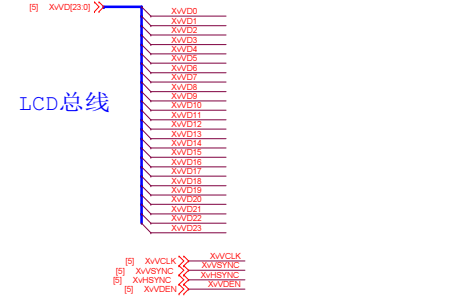
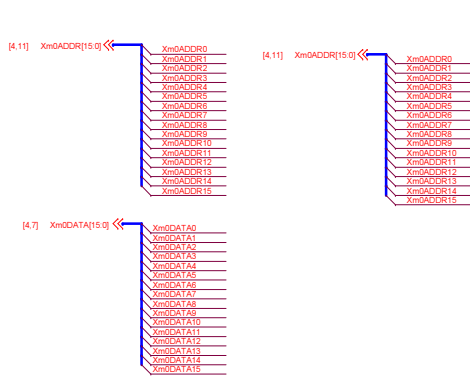
复位电路



Title		
Tiny210		
Size	Document Number	Rev
A3		0.1
Date:	Friday, May 24, 2013	Sheet 9 of 11



Title		
Tiny210		
Size	Document Number	Rev
A3		0.1
Date:	Wednesday, September 25, 2013	Sheet 10 of 11



改为贴片座，也是2.0mm间距的IDC连接器

LED x 4

