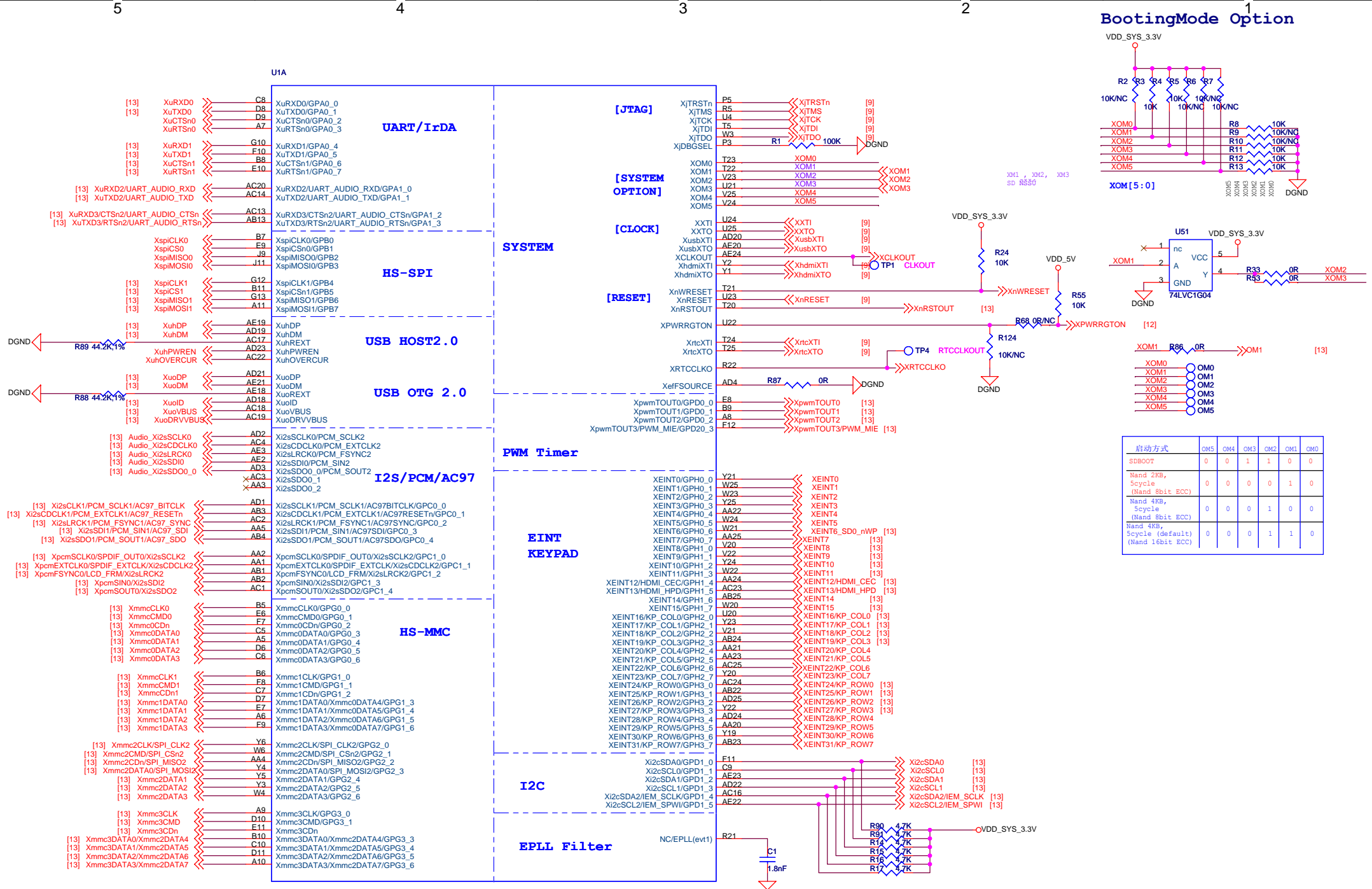
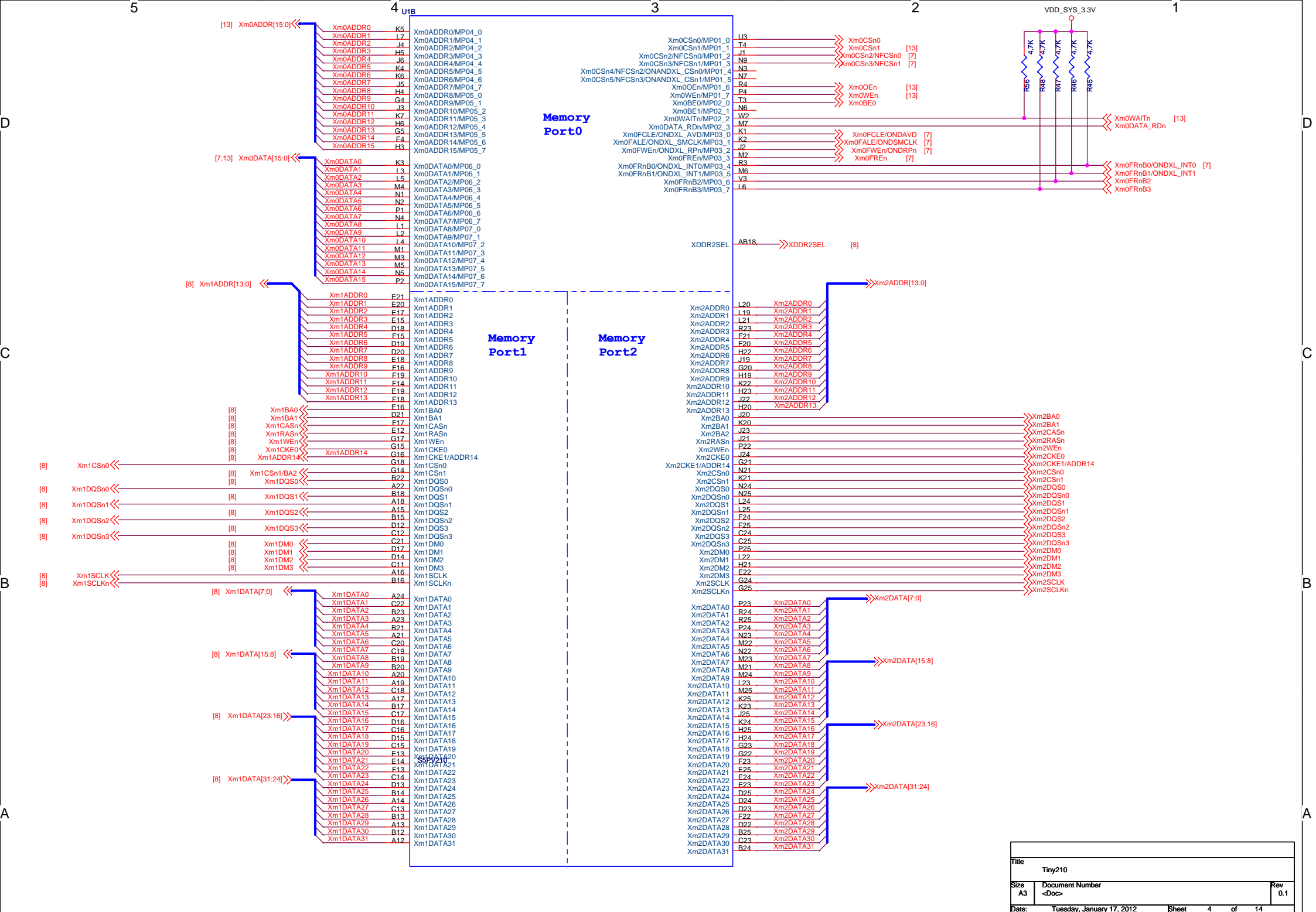
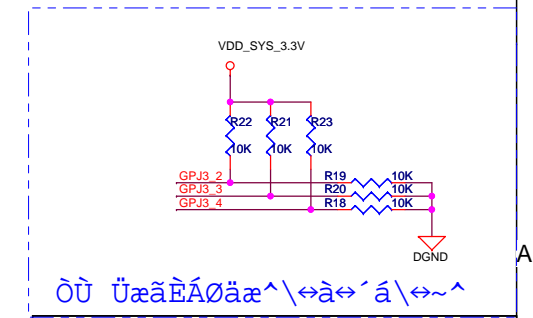
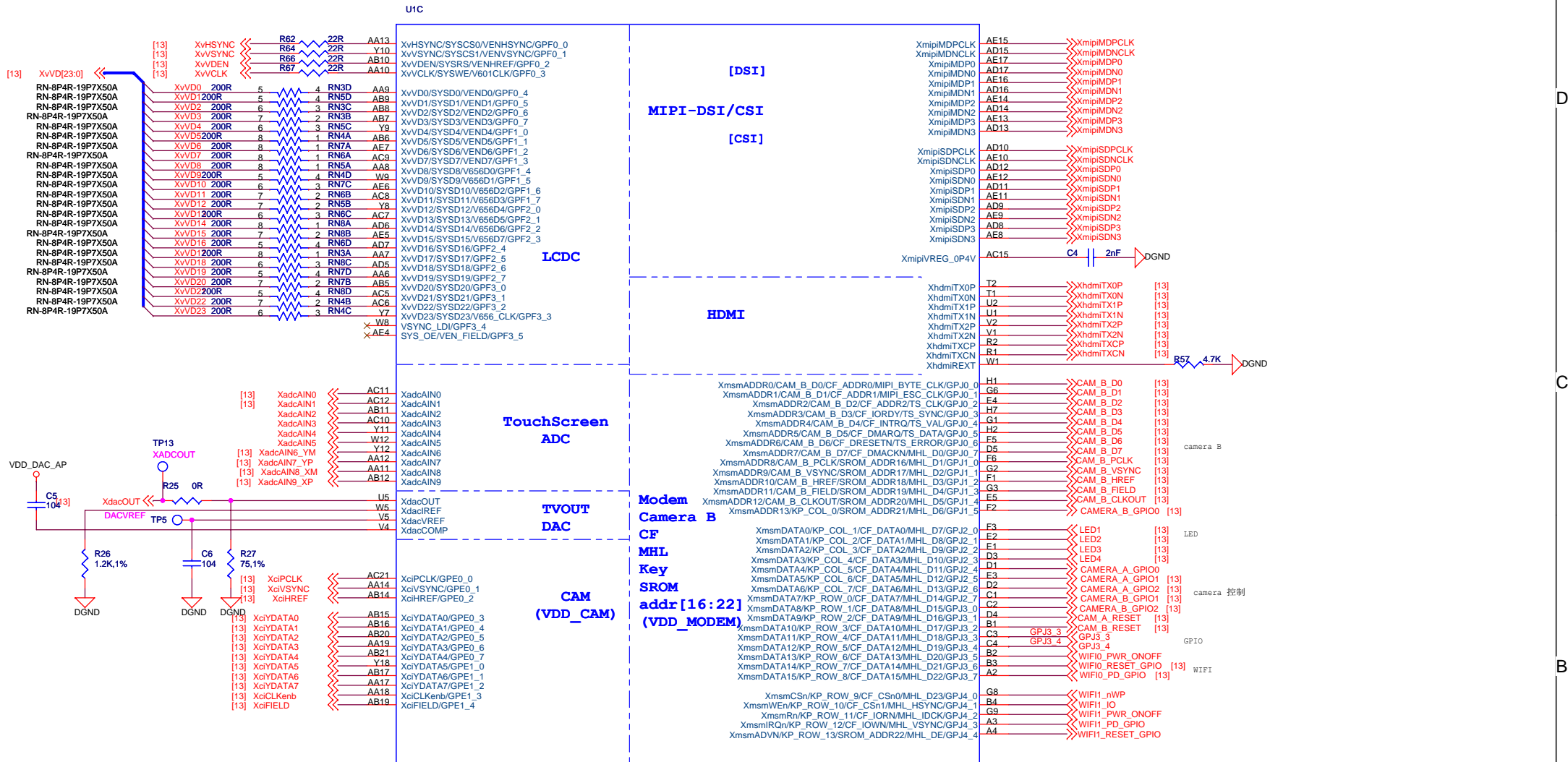


Title		
Tiny210		
Size	Document Number	Rev
A3	<Doc>	
Date:	Tuesday, January 17, 2012	Sheet 2 of 14



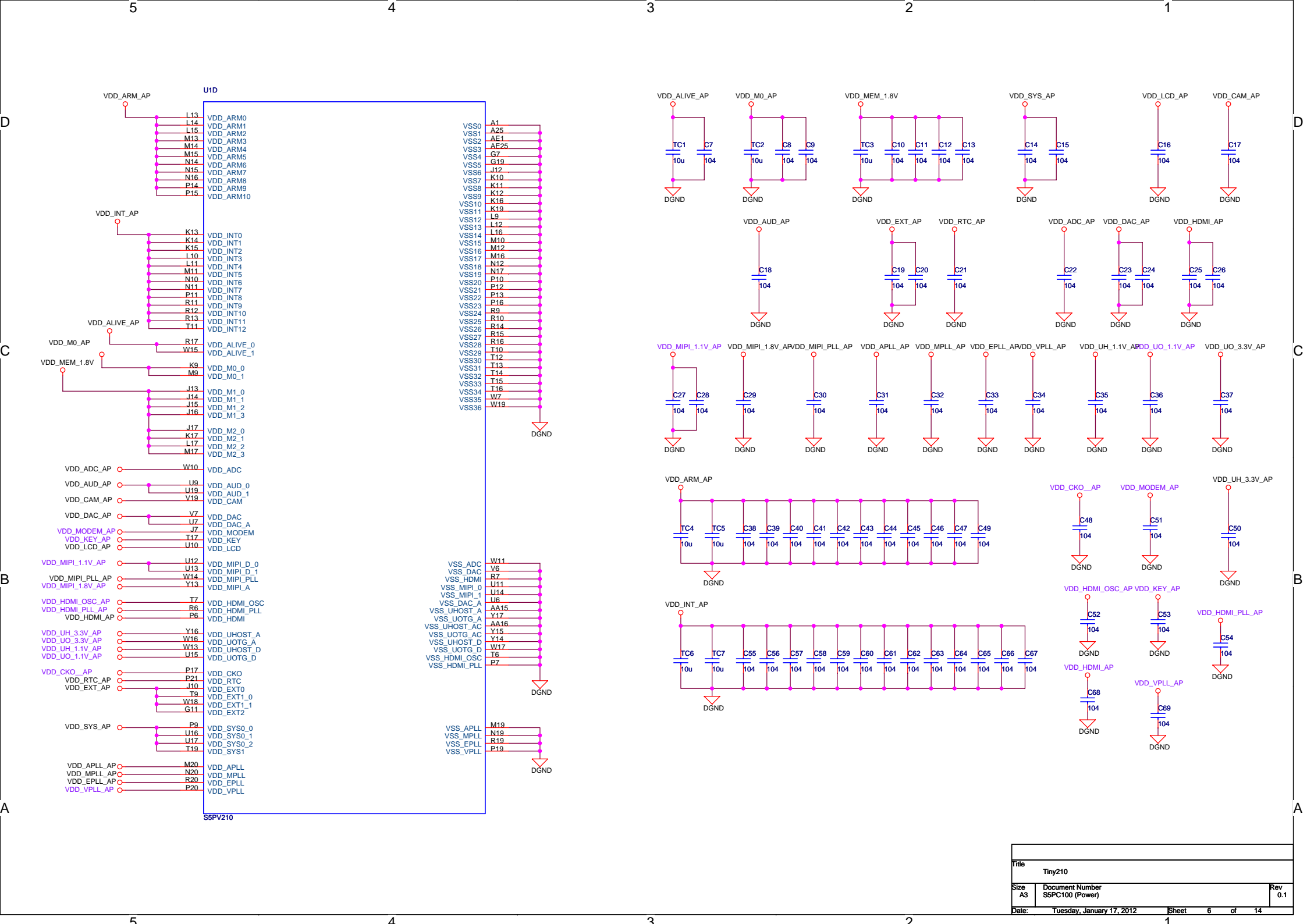


Title			Tiny210
Size	Document Number	Rev	
A3	<Doc>	0.1	
Date:	Tuesday, January 17, 2012	Sheet	4 of 14



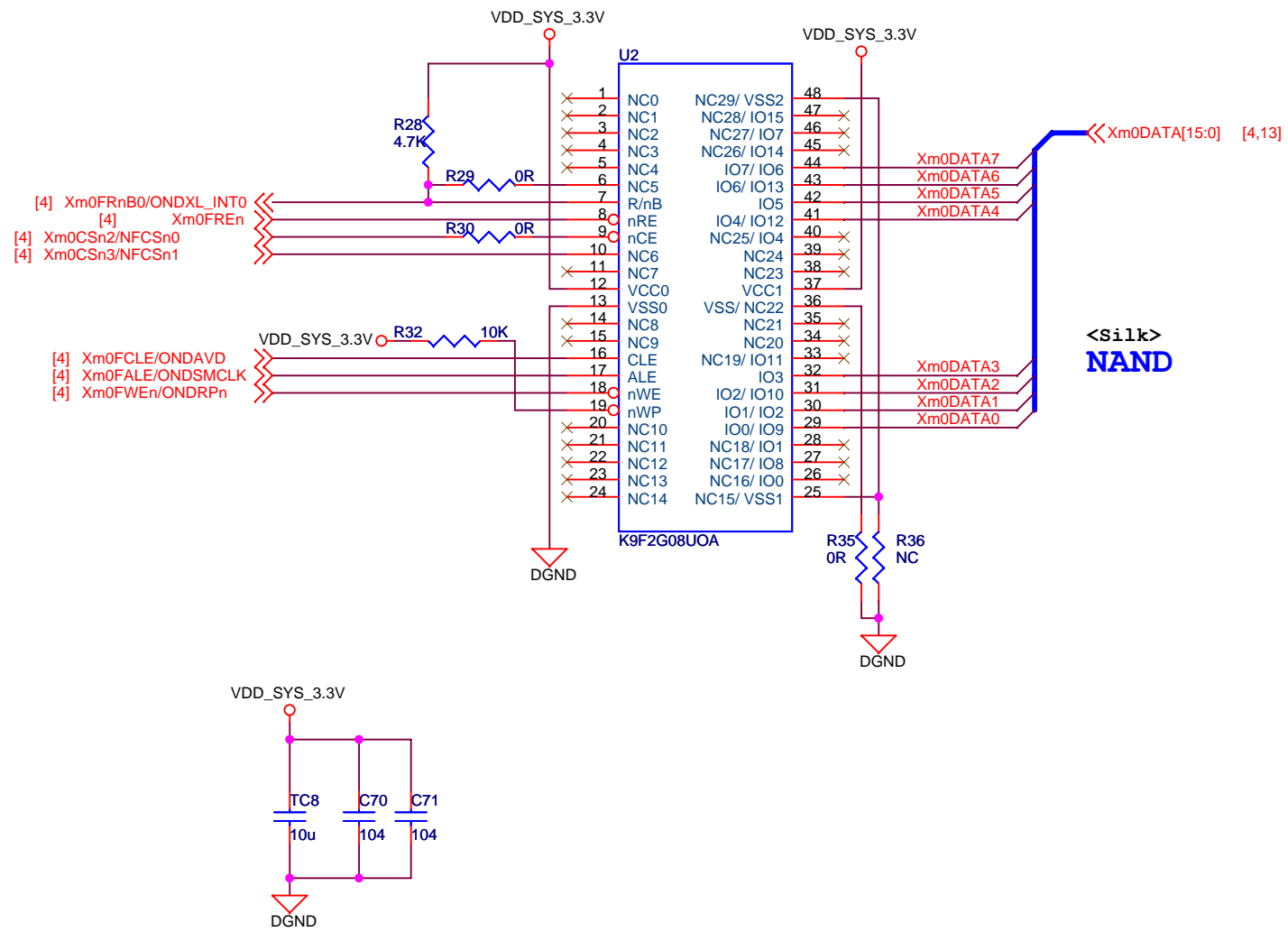
0Ù ÜæÈÁ0äæ^\↔à↔ á\↔~^

Title			Tiny210
Size	A3	Document Number	<Doc>
Date:	Tuesday, January 17, 2012	Sheet	5 of 14
Rev	0.1		



Title		
Tiny210		
Size	Document Number	Rev
A3	SSPC100 (Power)	0.1
Date:	Tuesday, January 17, 2012	Sheet 6 of 14

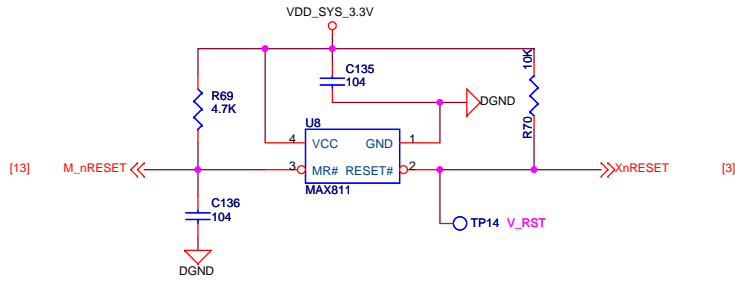
NAND Flash memory



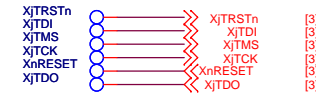
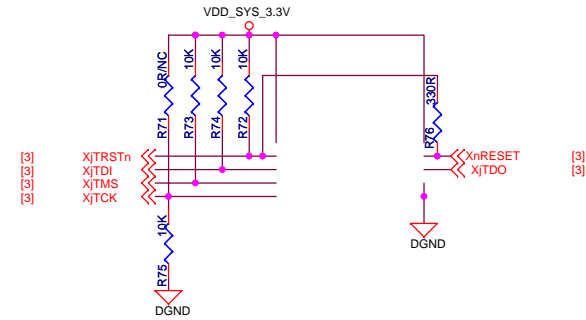
<Silk>
NAND

Title Tiny210		
Size A4	Document Number <Doc>	Rev 0.1
Date:	Tuesday, January 17, 2012	Sheet 7 of 14

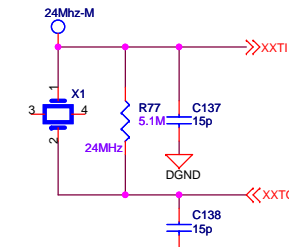
Reset circuit



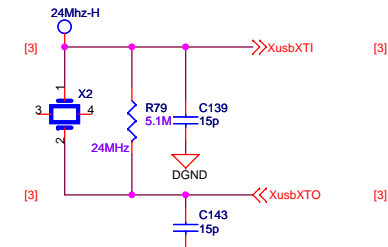
JTAG"fgdwi



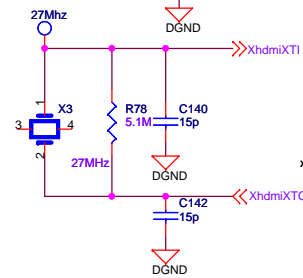
For PLL



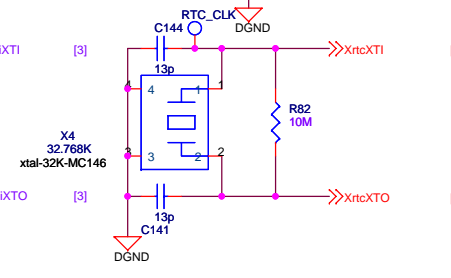
For USB HOST



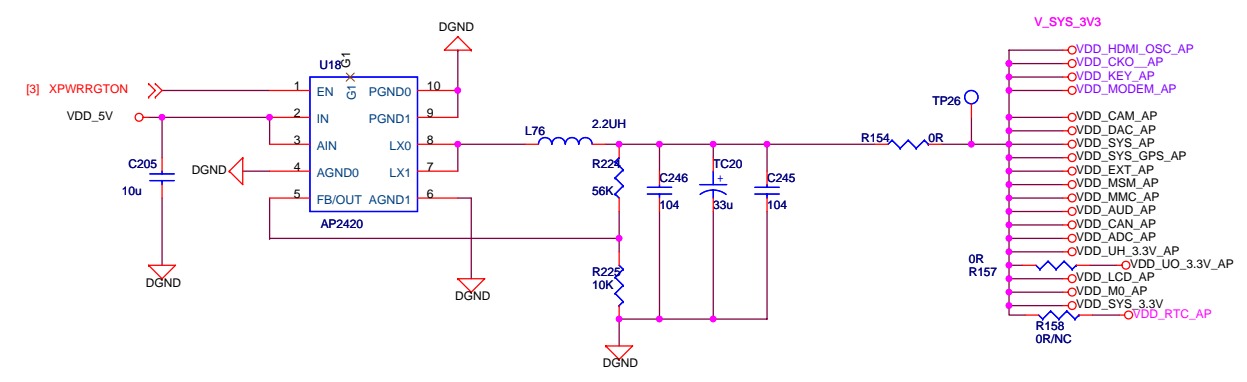
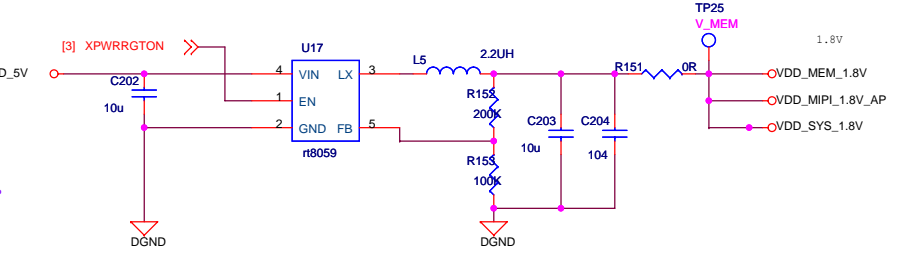
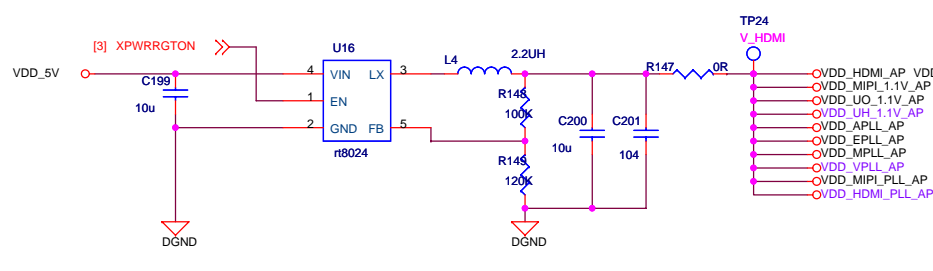
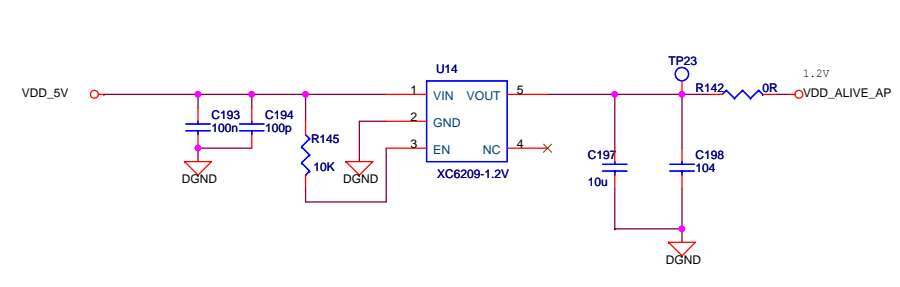
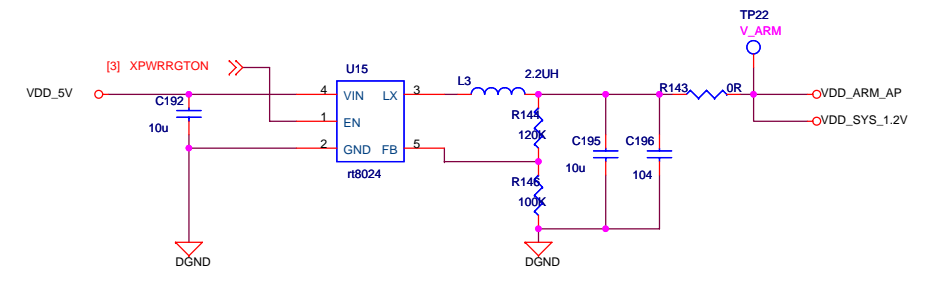
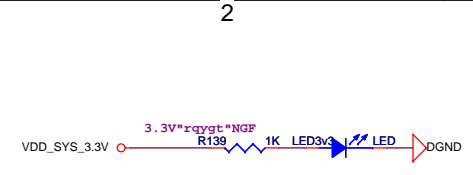
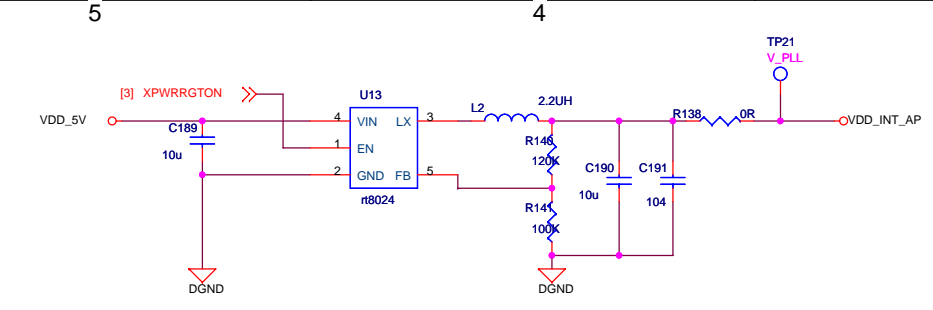
For VEDIO



For RTC

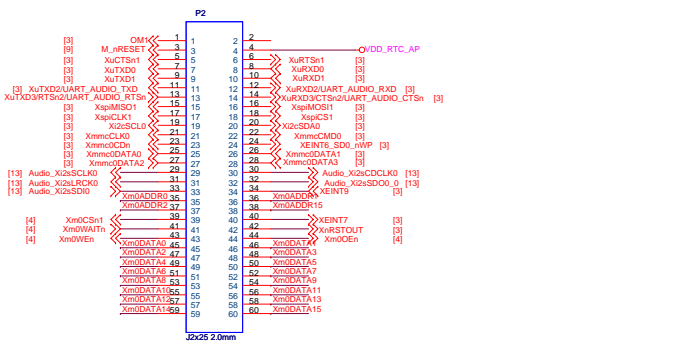
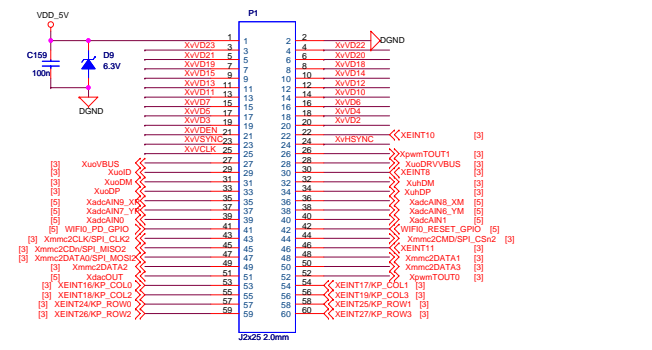
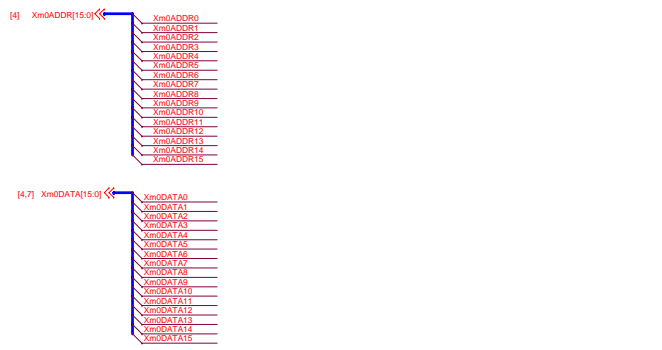


Title		
Tiny210		
Size	Document Number	Rev
A3	Reset/JTAG/USB/UART	0.1
Date:	Tuesday, January 17, 2012	Sheet 9 of 14

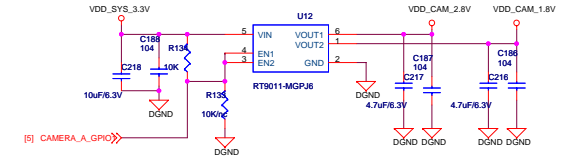
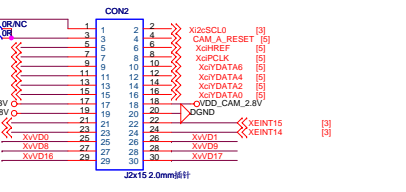
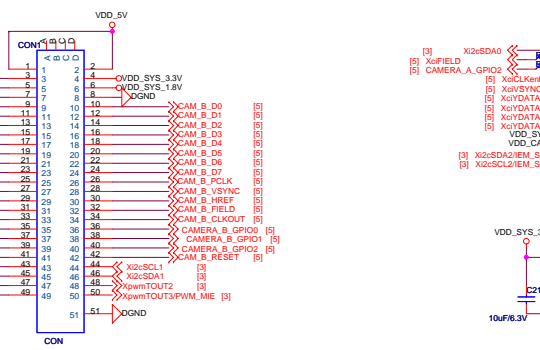
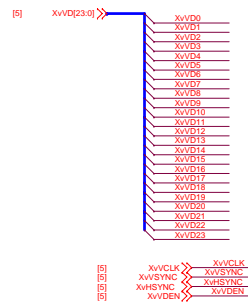


Title		
Tiny210		
Size A3	Document Number ID Mark/Fixed Hold	Rev 0.1
Date: Tuesday, January 17, 2012	Sheet 12 of 14	

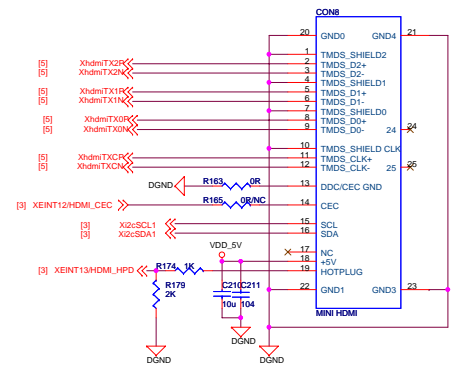
System Bus



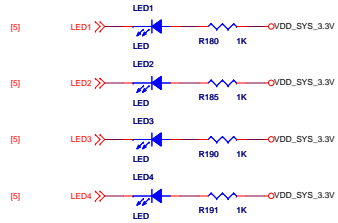
LCD Bus



MINI HDMI Interface circuit

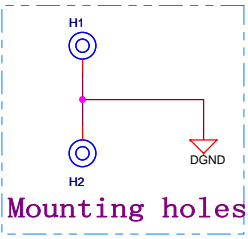
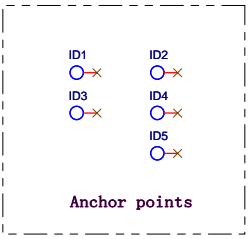


LED x 4



D

D



C

C

B

B

A

A

Title		
Tiny210		
Size	Document Number	Rev
A3	ID Mark/Fixed Hold	0.1
Date:	Tuesday, January 17, 2012	Sheet 14 of 14