

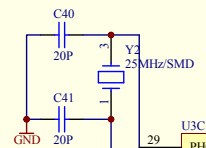
Title		
Size	Number	Revision
Date:	28-Dec-2013	Sheet of
File:	E:\Mywork\ARM\STM32F4x9\Schematic\STM32F439IG.Ddb	

U3B

PD0 FMC D2	142	PD0/CAN1_RX/FMC_D2/EVENTOUT
PD1 FMC D3	143	PD1/CAN1_TX/FMC_D3/EVENTOUT
PD2 DCMI D11 SDIO CMD44	144	PD2/TIM3_ETR/UART5_RX/SDIO_CMD/DCMI_D11/EVENTOUT
PD3 DCMI D5	145	PD3/SP2_SCK/I2S2_CK/USART2_CTS/FMC_CLK/DCMI_D5/LCD_G7/EVENTOUT
PD4 FSMC NOE	146	PD4/USART2_RTS/FMC_NOE/EVENTOUT
PD5 FSMC NWE	147	PD5/USART2_TX/FMC_NWE/EVENTOUT
PD6 FMC NWAIT DCMI D10 I2S3 SDB0	148	PD6/SP3_MOSI/I2S3_SS/SAI1_SD_A/USART2_RX/FMC_NWAIT/DCMI_D10/LCD_B2/EVENTOUT
PD7 NE1 REDE	151	PD7/USART2_CK/FMC_NE1/FMC_NCE2/EVENTOUT
PD8 FMC D13	96	PD8/USART3_TX/FMC_D13/EVENTOUT
PD9 FMC D14	97	PD9/USART3_RX/FMC_D14/EVENTOUT
PD10 FMC D15	98	PD10/USART3_CK/FMC_D15/LCD_B3/EVENTOUT
PD11 FMC A16	99	PD11/USART3_CTS/FMC_A16/EVENTOUT
PD12 FMC A17	100	PD12/TIM4_CH1/USART3_RTS/FMC_A17/EVENTOUT
PD13 LED	101	PD13/TIM4_CH2/FMC_A18/EVENTOUT
PD14 FMC D0	104	PD14/TIM4_CH3/FMC_D0/EVENTOUT
PD15 FMC D1	105	PD15/TIM4_CH4/FMC_D1/EVENTOUT
PE0 FMC NBL0	169	PE0/TIM4_ETR/UART8_RX/FMC_NBL0/DCMI_D2/EVENTOUT
PE1 FMC NBL1	170	PE1/UART8_TX/FMC_NBL1/DCMI_D3/EVENTOUT
PE2 KEY UP INT1	1	PE2/TRACECLK/SP4_SCK/SAI1_MCLK_A/ETH_MIL_TXD3/FMC_A23/EVENTOUT
PE3 KEY DOWN	2	PE3/TRACED0/SAI1_SD_B/FMC_A19/EVENTOUT
PE4 LCD B0	3	PE4/TRACED1/SP4_NSS/SAI1_FS_A/FMC_A20/DCMI_D4/LCD_B0/EVENTOUT
PE5 LCD G0	4	PE5/TRACED2/TIM9_CH1/SP4_MISO/SAI1_SCK_A/FMC_A21/DCMI_D6/LCD_G0/EVENTOUT
PE6 LCD G1	5	PE6/TRACED3/TIM9_CH2/SP4_MOSI/SAI1_SD_A/FMC_A22/DCMI_D7/LCD_G1/EVENTOUT
PE7 FMC D4	68	PE7/TIM1_ETR/UART7_RX/FMC_D4/EVENTOUT
PE8 FMC D5	69	PE8/TIM1_CH1/UART7_TX/FMC_D5/EVENTOUT
PE9 FMC D6	70	PE9/TIM1_CH1/FMC_D6/EVENTOUT
PE10 FMC D7	73	PE10/TIM1_CH2/FMC_D7/EVENTOUT
PE11 FMC D8	74	PE11/TIM1_CH2/SP4_NSS/FMC_D8/LCD_G3/EVENTOUT
PE12 FMC D9	75	PE12/TIM1_CH3/SP4_SCK/FMC_D9/LCD_B4/EVENTOUT
PE13 FMC D10	76	PE13/TIM1_CH3/SP4_MISO/FMC_D10/LCD_DE/EVENTOUT
PE14 FMC D11	77	PE14/TIM1_CH4/SP4_MOSI/FMC_D11/LCD_CLK/EVENTOUT
PE15 FMC D12	78	PE15/TIM1_BKIN/FMC_D12/LCD_R7/EVENTOUT
PF0 FMC A0	16	PF0/I2C2_SDA/FMC_A0/EVENTOUT
PF1 FMC A1	17	PF1/I2C2_SCL/FMC_A1/EVENTOUT
PF2 FMC A2	18	PF2/I2C2_SMB_A/FMC_A2/EVENTOUT
PF3 FMC A3	19	PF3/FMC_A3/EVENTOUT/ADC3_IN9
PF4 FMC A4	20	PF4/FMC_A4/EVENTOUT/ADC3_IN4
PF5 FMC A5	21	PF5/FMC_A5/EVENTOUT/ADC3_IN5
PF6 SAI1 SDB SPIS NSS	24	PF6/TIM10_CH1/SPIS_NSS/SAI1_SD_B/UART7_RX/FMC_NIORD/EVENTOUT/ADC3_IN4
PF7 SAI1 MCLKB SPIS SCK25	25	PF7/TIM11_CH1/SPIS_SCK/SAI1_MCLK_B/UART7_TX/FMC_NRG/EVENTOUT/ADC3_IN5
PF8 SAI1 SCKB SPIS MISO	26	PF8/SP5_MISO/SAI1_SCK_B/TIM13_CH1/FMC_NIOWR/EVENTOUT/ADC3_IN6
PF9 SAI1 FSB SPIS MOSI	27	PF9/SP5_MOSI/SAI1_FS_B/TIM14_CH1/FMC_CD/EVENTOUT/ADC3_IN7
PF10 LCD DE	28	PF10/FMC_INTR/DCMI_D11/LCD_DE/EVENTOUT/ADC3_IN8
PF11 FMC SDNRAS9	59	PF11/SP15_MOSI/FMC_SDNRAS/DCMI_D12/EVENTOUT
PF12 FMC A6	60	PF12/FMC_A6/EVENTOUT
PF13 FMC A7	63	PF13/FMC_A7/EVENTOUT
PF14 FMC A8	64	PF14/FMC_A8/EVENTOUT
PF15 FMC A9	65	PF15/FMC_A9/EVENTOUT
PG0 FMC A10	66	PG0/FMC_A10/EVENTOUT
PG1 FMC A11	67	PG1/FMC_A11/EVENTOUT
PG2 FMC A12	106	PG2/FMC_A12/EVENTOUT
PG3 USB1_P_EN	107	PG3/FMC_A13/EVENTOUT
PG4 FMC A14	108	PG4/FMC_A14/FMC_BA0/EVENTOUT
PG5 FMC A15	109	PG5/FMC_A15/FMC_BA1/EVENTOUT
PG6 LCD R7	110	PG6/FMC_INT2/DCMI_D12/LCD_R7/EVENTOUT
PG7 LCD CLK	111	PG7/USART6_CK/FMC_INT3/DCMI_D13/LCD_CLK/EVENTOUT
PG8 FMC SDCLK12	112	PG8/SP16_NSS/USART6_RTS/ETH_PPS_OUT/FMC_SDCLK/EVENTOUT
PG9 FSMC NCE3152	153	PG9/USART6_RX/FMC_NE2/FMC_NCE3/EVENTOUT
PG10 LCD B2	153	PG10/LCD_G3/FMC_NCE4_1/FMC_NE3/DCMI_D2/LCD_B2/EVENTOUT
PG11 LCD B3	154	PG11/ETH_MIL_TX_EN/ETH_RMII_TX_EN/FMC_NCE4_2/DCMI_D3/LCD_B3/EVENTOUT
PG12 LCD B1	155	PG12/SP16_MISO/USART6_RTS/LCD_B4/FMC_NE4/LCD_B1/EVENTOUT
PG13 MII TXD0	156	PG13/SP16_SCK/USART6_CTS/ETH_MII_TXD0/ETH_RMII_TXD0/FMC_A24/EVENTOUT
PG14 MII TXD1	157	PG14/SP16_MOSI/USART6_TX/ETH_MII_TXD1/ETH_RMII_TXD1/FMC_A25/EVENTOUT
PG15 FMC SDNCAS60	160	PG15/USART6_CTS/FMC_SDNCAS/DCMI_D13/EVENTOUT

STM32F439IG

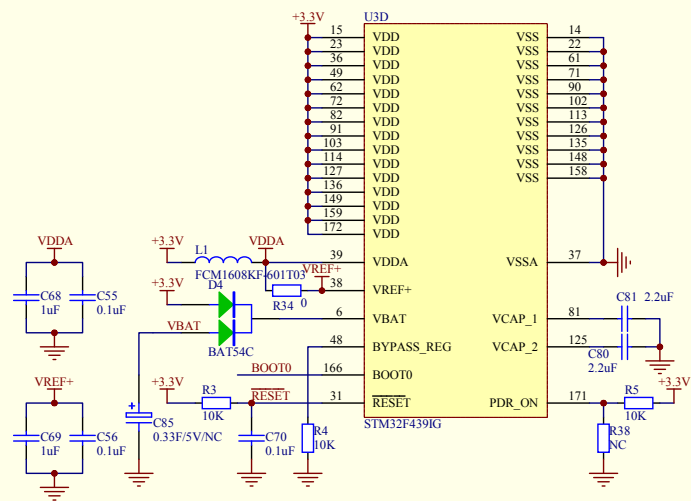
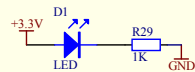
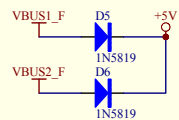
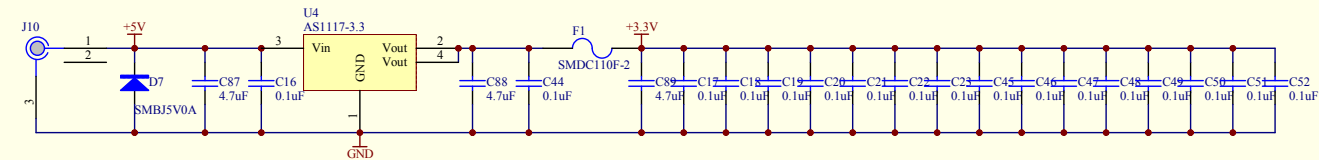
Title		
Size	Number	Revision
B		
Date:	28-Dec-2013	Sheet of
File:	E:\Mywork\ARM\STM32F4x9\Schematic	31 of 91



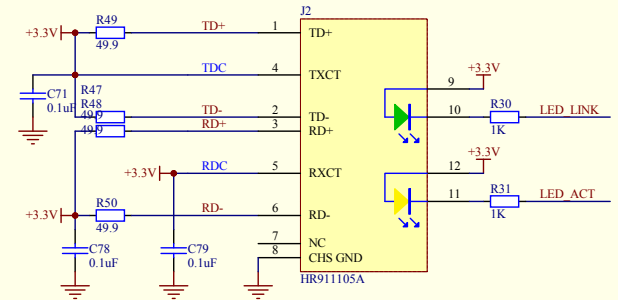
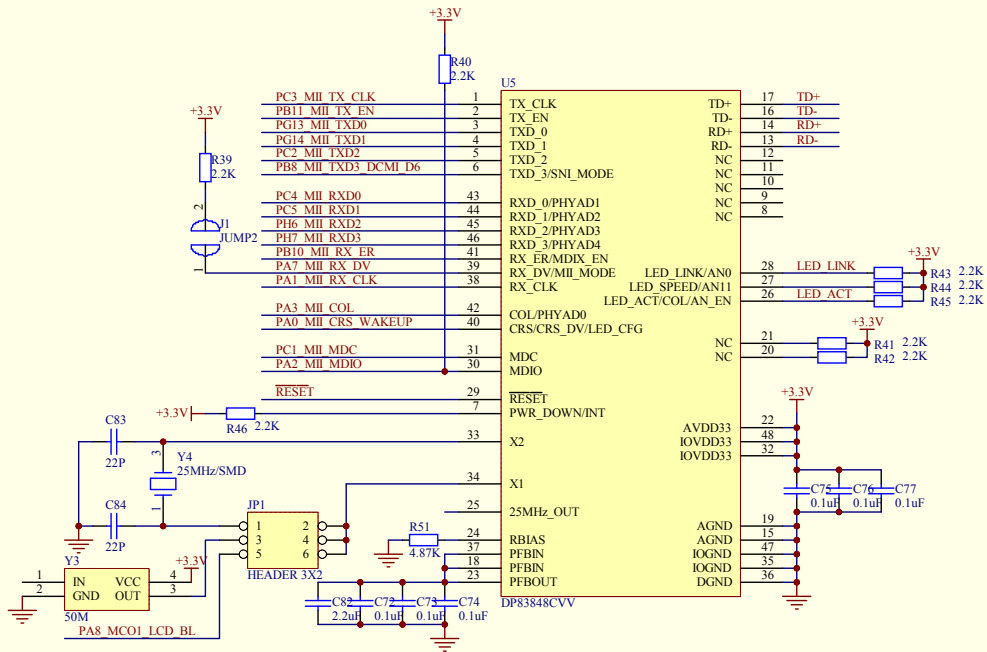
29	PH0/EVENTOUT/OSC_IN
30	PH1/EVENTOUT/OSC_OUT
43	PH2/LCD_R0
44	PH3/LCD_R1
45	PH4/ETH_MII_COL/FMC_SDNE0/LCD_R1/EVENTOUT
46	PH4/IC2_SCL/OTG_HS_ULPI_NXT/EVENTOUT
47	PH5/IC2_SDA/SPIS_NSS/FMC_SDNWE/EVENTOUT
83	PH6/IC2_SMBA/SPIS_SCK/TIM12_CH1/ETH_MII_RXD2/FMC_SDNE1/DCMI_D8/EVENTOUT
84	PH7/MII_RXD3
85	PH8/LCD_R2
86	PH9/LCD_R3
87	PH10/LCD_R4
88	PH10/TIM5_CH1/FMC_D18/DCMI_D1/LCD_R4/EVENTOUT
89	PH11/TIM5_CH2/FMC_D19/DCMI_D2/LCD_R5/EVENTOUT
128	PH12/TIM5_CH3/FMC_D20/DCMI_D3/LCD_R6/EVENTOUT
129	PH13/TIM8_CH1/CAN1_T/FMC_D21/LCD_G2/EVENTOUT
130	PH14/TIM8_CH2N/FMC_D22/DCMI_D4/LCD_G3/EVENTOUT
131	PH15/TIM8_CH3N/FMC_D23/DCMI_D11/LCD_G4/EVENTOUT
132	PH0/TIM5_CH4/SPIS_NSS/IS22_WS/FMC_D24/DCMI_D13/LCD_G5/EVENTOUT
133	PH1/SPIS_SCK/IS22_CK/FMC_D25/DCMI_D8/LCD_G6/EVENTOUT
134	PH2/TIM8_CH4/SPIS_MISO/IS22ext_SD/FMC_D26/DCMI_D9/LCD_G7/EVENTOUT
173	PH3/TIM8_ETR/SPIS_MOSI/IS22_SD/FMC_D27/DCMI_D10/EVENTOUT
174	PH4/TIM8_BKIN/FMC_NBL2/DCMI_D5/LCD_B4/EVENTOUT
175	PH5/TIM8_CH1/FMC_NBL3/DCMI_VSYNC/LCD_B5/EVENTOUT
176	PH6/TIM8_CH2/FMC_D28/DCMI_D6/LCD_B6/EVENTOUT
7	PH7/TIM8_CH3/FMC_D29/DCMI_D7/LCD_B7/EVENTOUT
11	PH8/EXP3_SDDET
12	PH9/LCD_VSYNC
13	PH10/LCD_VSYNC
13	PH10/ETH_MII_RX_ER/FMC_D31/LCD_VSYNC/EVENTOUT
13	PH11/OTG_HS_ULPI_DIR/EVENTOUT

STM32F439IG

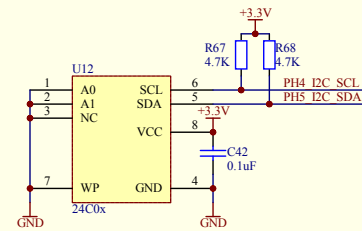
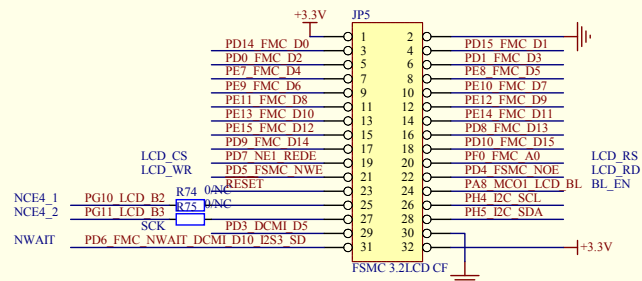
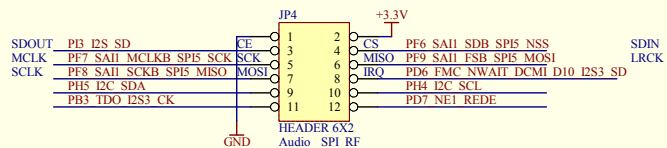
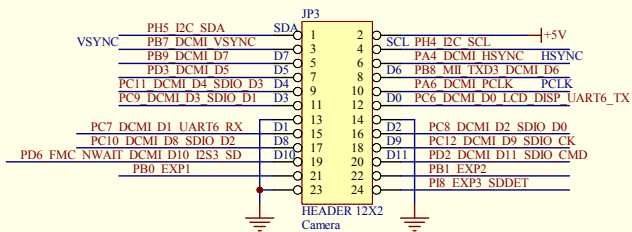
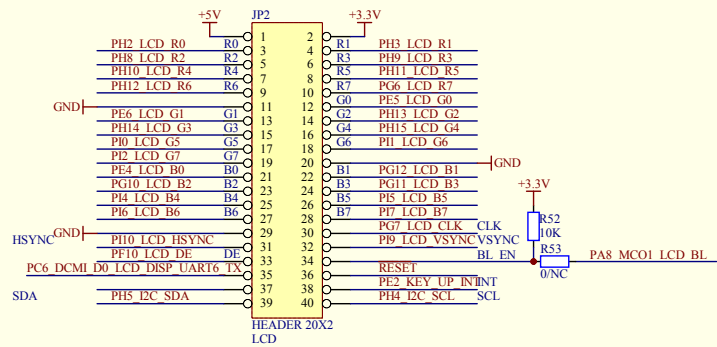
Title		
Size	Number	Revision
B		
Date:	28-Dec-2013	Sheet of
File:	E:\Mywork\ARM\STM32F4x9\Schematic\STM32F439IG.Ddb	



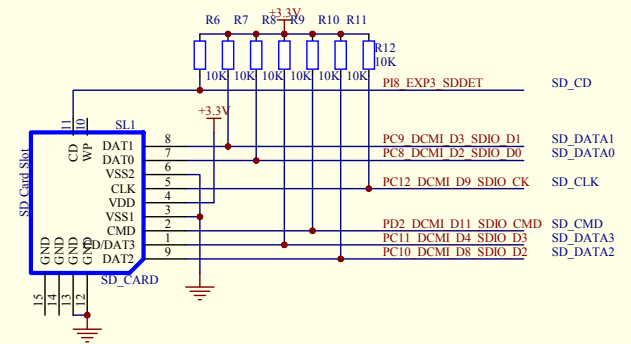
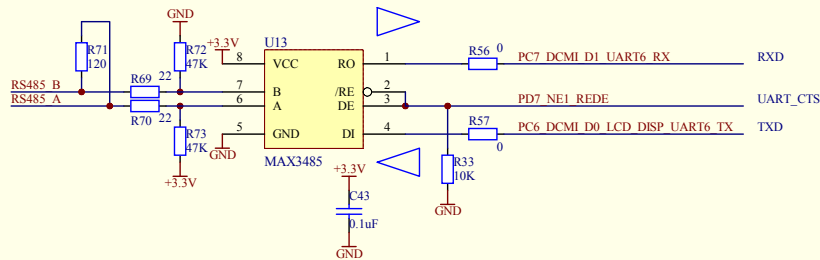
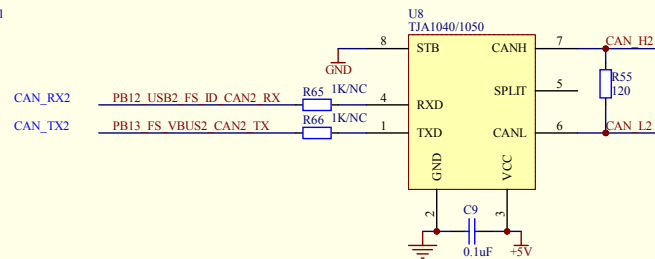
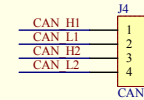
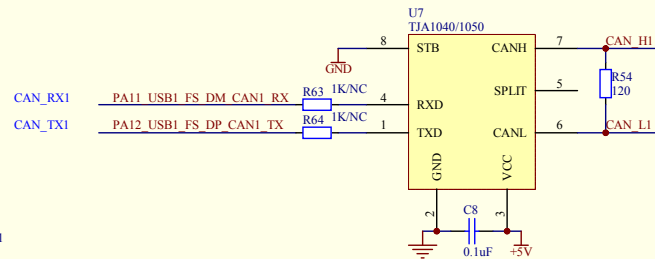
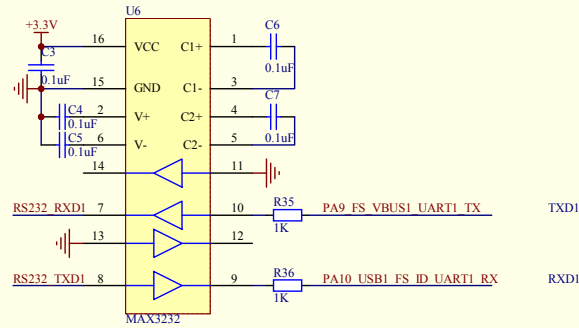
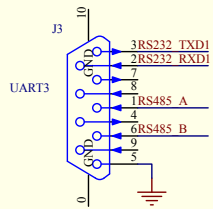
Title		
Size	Number	Revision
Date:	28-Dec-2013	Sheet of
File:	E:\Mywork\ARM\STM32F4x9\Schematic	Sheet of



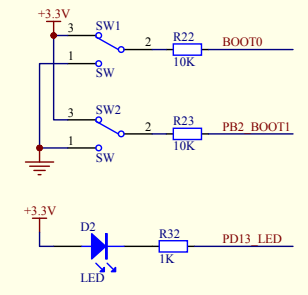
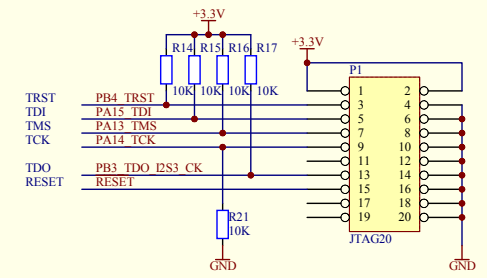
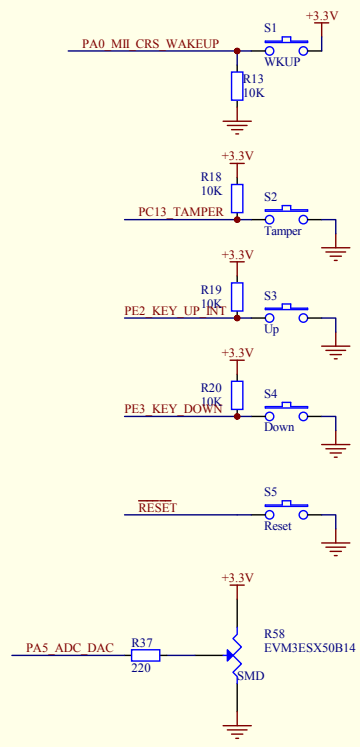
Title		
Size	Number	Revision
Date:	28-Dec-2013	Sheet of
File:	E:\Mywork\ARM\STM32F4x9\Schematic\32F4x9\IG.Ddb	6



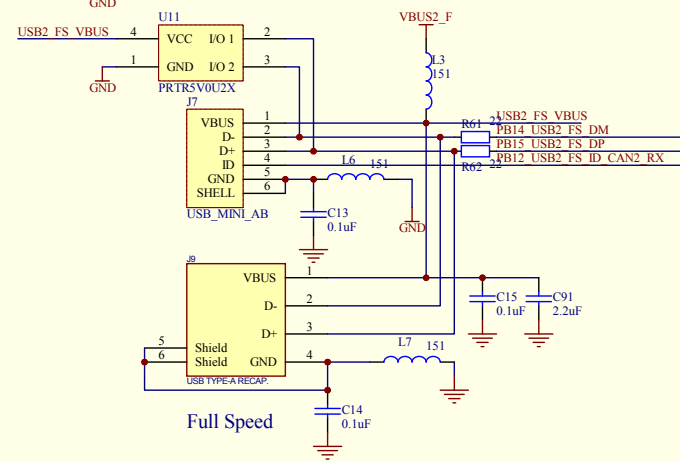
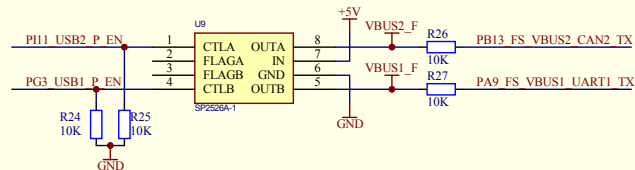
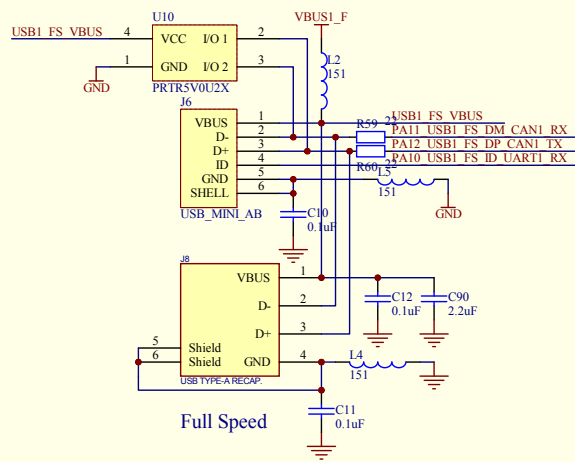
Title		
Size	Number	Revision
Date:	28-Dec-2013	Sheet of
File:	E:\Mywork\ARM\STM32F4x9\Schematic\32LCD CF	9/1G Ddb



Title		
Size	Number	Revision
Date:	28-Dec-2013	Sheet of
File:	E:\Mywork\ARM\STM32F4x9\Schematic\SDIO\Bk9IG.Ddb	SDIO



Title		
Size	Number	Revision
Date:	28-Dec-2013	Sheet of
File:	E:\Mywork\ARM\STM32F4x9\Schematic\STM32F4x9IG.Ddb	



Title		
Size	Number	Revision
B		
Date:	28-Dec-2013	Sheet of
File:	E:\Mywork\ARM\STM32F4x9\Schematic\STM32F4x9IG.Ddb	3 of 6